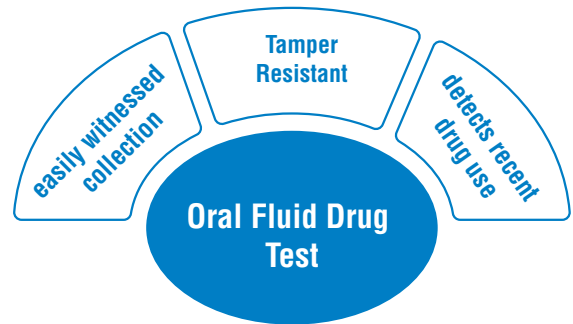




T-Square[®] Oral Fluid Drug Test



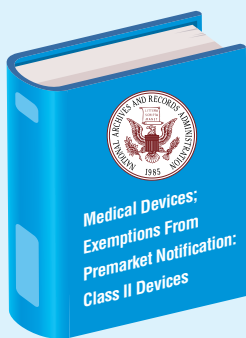
Oral Fluid Drug Test is a simple and convenient method of drug screening. Full observation during collection allows the testing to be performed anytime and anywhere, which greatly reduces the specimen-tampered concerns. Because it takes time for drug to metabolize and pass through body, oral fluid is also recognized as the optimal method for drug screening.



Employment & Insurance (E&I) exempt

NOW

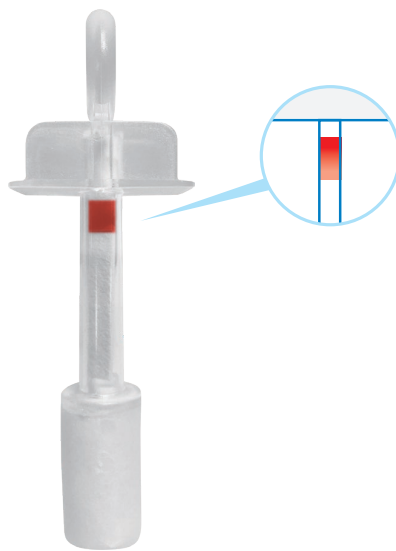
Expanded application of Oral Fluid Drug Testing to
Non-Federal Workplace and Insurance!



The Food and Drug Administration (FDA or Agency) is announcing a list of class II devices that the Agency has determined based on established factors to no longer require premarket notification to provide reasonable assurance of safety and effectiveness, subject to certain limitations. FDA is publishing this notice of that determination in accordance with procedures established by the 21st Century Cures Act.

* The employment & Insurance (E&I) Exemption Notice by the Food and Drug Administration on 07/11/2017.

T-Square[®] Oral Fluid Drug Test



• Optional saliva saturation indicator

• Convenient rapid screening

• Test up to 12 drugs & alcohol

• E&I exempt testing panels

• Rapid results

Exempt Panels

Drug	Cutoff
Barbiturates (BAR)	20 ng/mL
Methylenedioxy-methamphetamine (MDMA)	50 ng/mL
Marijuana (THC)	40 ng/mL
Amphetamine (AMP)	50 ng/mL
Cocaine (COC)	20 ng/mL

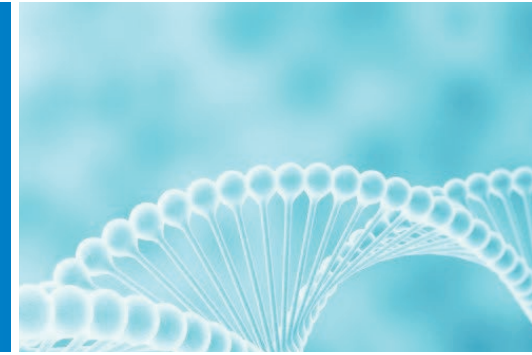
Drug	Cutoff
Methamphetamine (MET)	50 ng/mL
Opiate (OPI)	40 ng/mL
Oxycodone (OXY)	20 ng/mL
Methadone (MTD)	30 ng/mL
Phencyclidine (PCP)	10 ng/mL

Forensic Use Panels

ACL	Alcohol (ACL)	0.02g/dL
AMP	Amphetamine (AMP)	50ng/mL
BAR	Barbiturates (BAR)	60ng/mL
BZO	Benzodiazepines (BZO)	30ng/mL
BUP	Buprenorphine (BUP)	5ng/mL
COC	Cocaine (COC)	20ng/mL
THC	Cannabinoids (THC)	25ng/mL
EDDP	2-ethylidene-1,5-dimethyl-3,3-diphenylpyrrolidine (EDDP)	20ng/mL
FTY	Fentanyl (FTY)	30ng/mL

KET	Ketamine (KET)	100ng/mL
MTD	Methadone (MTD)	30ng/mL
MET	Methamphetamine (MET/mAMP)	50ng/mL
MDMA	Methylenedioxymethamphetamine (MDMA)	100ng/mL
OPI	Opiate (OPI)	40ng/mL
OXY	Oxycodone (OXY)	20ng/mL
PCP	Phencyclidine (PCP)	10ng/mL
K2	Synthetic Cannabisoids (K2)	5ng/mL

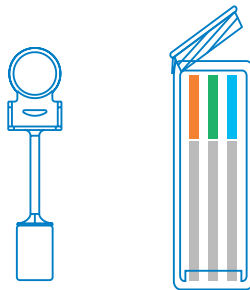
T-Square[®] Test Procedure



Allow the kit and specimen to come to room temperature prior to testing.
AVOID PLACING ANYTHING IN THE MOUTH 10 MINUTES PRIOR TO TESTING.

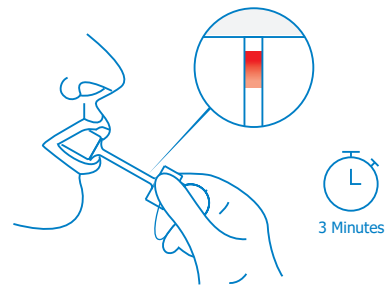
Step 1

Remove the test cube and the sponge collector from the foil pouch by tearing at the notch. Place the test cube upright on a level surface.



Step 2

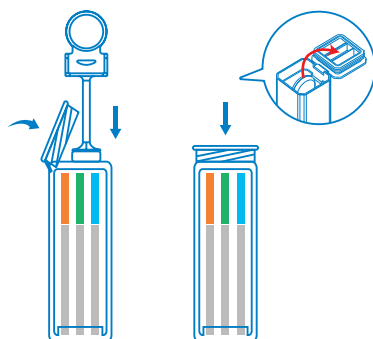
Put the sponge end of the collector on your tongue to collect oral fluid for about 7 minutes or 3 minutes if using the saturation indicator, until the color on saturation indicator strip appears RED in the indicator window.



Step 3

Open the test cube and place the fully saturated sponge collector inside the test cube. Press the sponge collector down firmly until it reaches the bottom of the test cube, then close the cube lid tightly while compressing the collector. Keep test cube upright on a flat surface and follow Step 4.

Note: Make sure the sponge collector is inserted vertically and the handle of collector is put into the clamp.



Step 4

1. Interpreting Alcohol Test Result:

Read result at 2 minutes.

NEGATIVE: No color changes on reaction pad.

POSITIVE: Compare the color of reaction pad with provided color chart to estimate the approximate blood alcohol level.

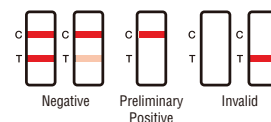
2. Interpreting Drug Test Results:

Read results at 5 minutes. A negative result will be shown by two color lines on the strip.

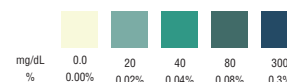
The intensity of the line does not matter. A positive result will be shown by a single color line in the C section of the test strip. If there are no color lines present or a single color line in the T section of the test strip,

the results are invalid, and the test should be repeated.

Drug Test Results

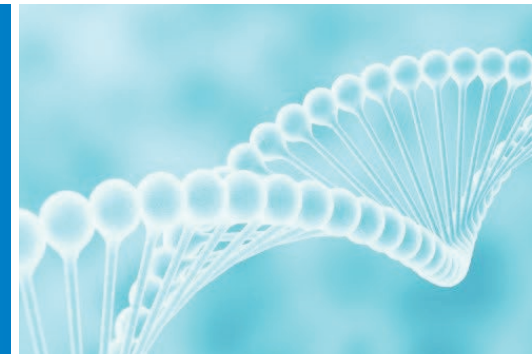


Blood Alcohol Concentration



NOTE: Results after more than 2 minutes may be not accurate

T-Square[®] ordering information



Oral Drug Testing Products

※ Box Size / Case Size
25 / 4

Item Code	Description	Complexity
QODOA-156NTEUO-I	5-Panel T-Square no THC with indicator; AMP, COC, MET, OPI, PCP	E&I Exempt
QODOA-256EUO-I	5-Panel T-Square with indicator; AMP, COC, MET, OPI, THC	E&I Exempt
QODOA-166EUO-I	6-Panel T-Square with indicator; AMP, COC, MET, OPI, PCP, THC	E&I Exempt
QODOA-366NTEUO-I	6-Panel T-Square no THC with Indicator; AMP, COC, MET, OPI, OXY, PCP	E&I Exempt
QODOA-666EUO-I	6-Panel T-Square with indicator; AMP, COC, MET, OPI, OXY, THC	E&I Exempt
QODOA-376EUO-I	7-Panel T-Square with Indicator; AMP, COC, MET, OPI, OXY, PCP, THC	E&I Exempt
QODOA-496NTEUO-I	9-Panel T-Square no THC with Indicator; AMP, BAR, COC, MDMA, MET, MTD, OPI, OXY, PCP	E&I Exempt
QODOA-10106EUO-I	10-Panel T-Square with indicator; AMP, BAR, COC, MDMA, MET, MTD, OPI, OXY, PCP, THC	E&I Exempt
QODOA-266-I	6-Panel T-Square with indicator; AMP, BZO, COC, MET, OPI, THC	Forensic Use Only
QODOA-376-A*	7-Panel T-Square; AMP, COC, MET, OPI, PCP, THC + ALC	Forensic Use Only
QODOA-186-I	8-Panel T-Square with Indicator; AMP, BUP, BZO, COC, MET, OPI, OXY, THC	Forensic Use Only
QODOA-2106	10-Panel T-Square; AMP, BUP, BZO, COC, MET, MTD, OPI, OXY, PCP, THC	Forensic Use Only
QODOA-2106-I	10-Panel T-Square with indicator; AMP, BUP, BZO, COC, MET, MTD, OPI, OXY, PCP, THC	Forensic Use Only
QODOA-5106	10-Panel T-Square; AMP, BAR, BUP, BZO, COC, MET, OPI, OXY, PCP, THC	Forensic Use Only
QODOA-1116-A*	11-Panel T-Square without THC ; AMP, BAR, BUP, BZO, COC, MET, MTD, OPI, OXY, PCP + ALC	Forensic Use Only
QODOA-2116-A*	11-Panel T-Square; AMP, BAR, BUP, BZO, COC, MET, OPI, OXY, PCP, THC+ALC	Forensic Use Only
QODOA-4116-A*	11-Panel T-Square; AMP, BAR, BZO, COC, MET, MTD, OPI, OXY, PCP, THC+ALC	Forensic Use Only
QODOA-5116-I	11-Panel T-Square with Indicator; AMP, BAR, BUP, BZO, COC, MET, MDMA, MTD, OXY, OPI, THC	Forensic Use Only
QODOA-3126-A*	12-Panel T-Square; AMP, BAR, BUP, BZO, COC, MET, MTD, OPI, OXY, PCP, THC+ALC	Forensic Use Only
QODOA-6126	12-Panel T-Square; AMP, BAR, BUP, BZO, COC, MDMA, MET, MTD, OPI, OXY, PCP, THC	Forensic Use Only

* "A" at the end stands for alcohol

※ Customizable drug panels & Alcohol test are available.