

SurGuard[®]3 Safety Hypodermic Needles and Syringes



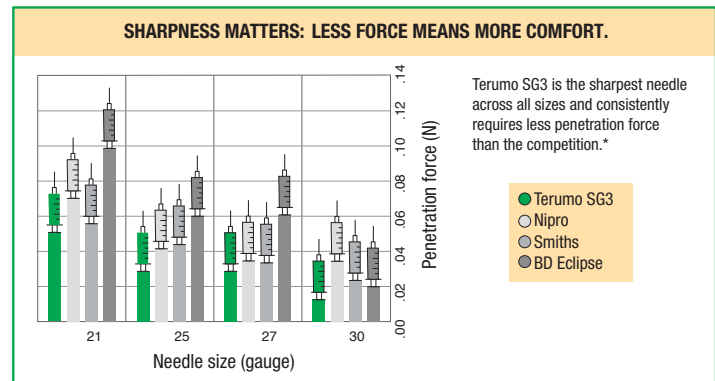
- **Sharper**— Patients benefit from a more comfortable injection, as our needles are 10% sharper than the market leader and sharpest on average among major brands*
- **Safer**— Safety mechanism includes a lock for both the needle and the hub, and is designed to minimize the ability to be removed
- **Smarter**— Clinicians can choose how they activate the safety mechanism using their finger, thumb or hard surface as dictated by the clinical situation

SurGuard[®]3 Safety Hypodermic Needle Packaging: 100/box, 8 boxes/case (800)

| Product Code | Description |
|--------------|-------------------|
| SG3-1825 | 18G x 1" needle |
| SG3-1838 | 18G x 1 ½" needle |
| SG3-2025 | 20G x 1" needle |
| SG3-2038 | 20G x 1 ½" needle |
| SG3-2051 | 20G x 2" needle |
| SG3-2125 | 21G x 1" needle |
| SG3-2138 | 21G x 1 ½" needle |
| SG3-2225 | 22G x 1" needle |
| SG3-2238 | 22G x 1 ½" needle |
| SG3-2325 | 23G x 1" needle |
| SG3-2338 | 23G x 1 ½" needle |
| SG3-2516 | 25G x ⅝" needle |
| SG3-2525 | 25G x 1" needle |
| SG3-2538 | 25G x 1 ½" needle |
| SG3-2713 | 27G x ½" needle |
| SG3-3013 | 30G x ½" needle |

SurGuard[®]3 Hypodermic Syringes with Safety Needle Packaging: 100/box, 4 boxes/case (400)

| Product Code | Description |
|--------------|------------------------------------|
| SG3-01T2516 | 1CC Syringe with 25G x ⅝" needle |
| SG3-01T2713 | 1CC Syringe with 27G x ½" needle |
| SG3-03L2025 | 3CC Syringe with 20G x 1" needle |
| SG3-03L2038 | 3CC Syringe with 20G x 1 ½" needle |
| SG3-03L2125 | 3CC Syringe with 21G x 1" needle |
| SG3-03L2138 | 3CC Syringe with 21G x 1 ½" needle |
| SG3-03L2225 | 3CC Syringe with 22G x 1" needle |
| SG3-03L2238 | 3CC Syringe with 22G x 1 ½" needle |
| SG3-03L2325 | 3CC Syringe with 23G x 1" needle |
| SG3-03L2516 | 3CC Syringe with 25G x ⅝" needle |
| SG3-03L2525 | 3CC Syringe with 25G x 1" needle |



SurGuard[®]3
SAFETY HYPODERMIC NEEDLE

A lot hinges on having the right needles. That's why Terumo's SurGuard[®]3 offers some very convincing benefits.

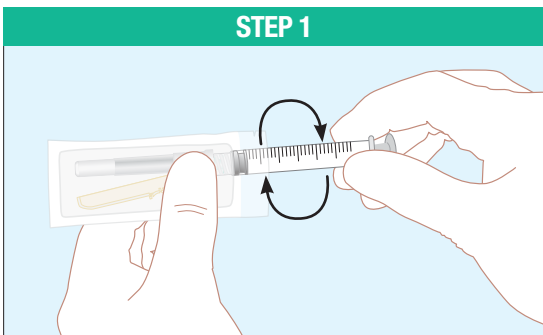
* Data on file.
These products have no components made of natural rubber latex.

SurGuard® 3 Safety Hypodermic Needle: Instructions For Use

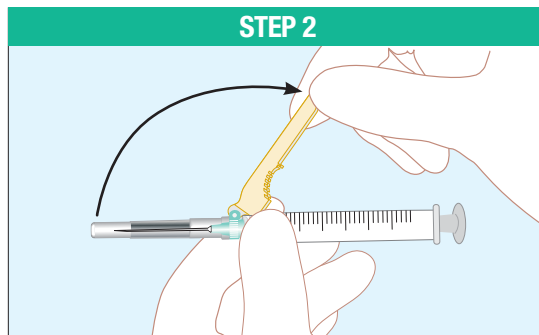
CE 0197

Based on IFU dated 6/2015 REV.1

The TERUMO® SurGuard® 3 SAFETY HYPODERMIC NEEDLE is intended for use in the aspiration and injection of fluids for medical purposes. The Terumo Safety Hypodermic Needle is compatible for use with standard luer slip and luer lock syringes. Additionally, after withdrawal of the needle from the body, the attached needle safety sheath can be manually activated to cover the needle immediately after use to minimize risk of accidental needlestick.

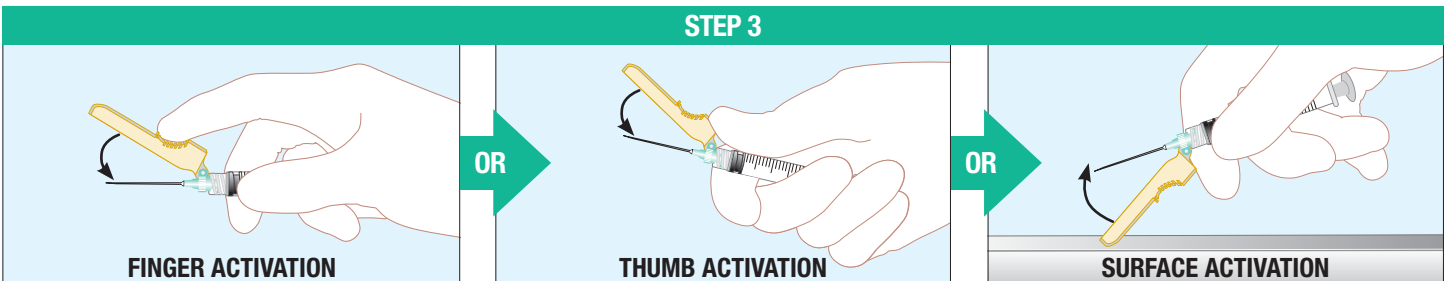


STEP 1. Tighten the syringe to the needle using aseptic technique. **Grip the base of the needle**, not the safety sheath, and turn the syringe clockwise.

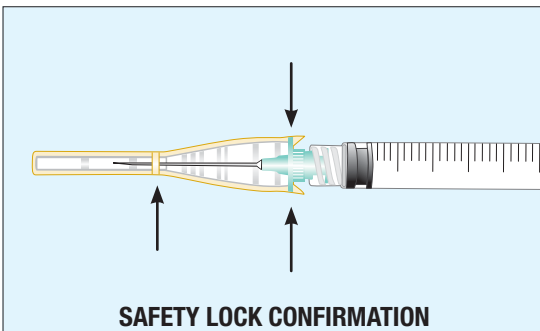


STEP 2. Move the safety sheath away from the needle and toward the syringe barrel **to the angle shown**, prior to removing the needle cap. Perform injection procedure according to established technique.

Note: The needle “bevel up” position is oriented to the position of the safety sheath.



STEP 3. After the injection procedure, use a one-handed technique to activate the safety mechanism using any of the three (3) methods illustrated above. (Activation is verified by an audible and/or tactile “click” and can be visually confirmed.)



STEP 4. Visually confirm that the safety sheath is fully engaged.

STEP 5

STEP 5. Dispose of used needles and materials following the policies and procedures of your facility as well as federal and local regulations for sharps disposal.

WARNINGS

- HANDLE WITH CARE TO AVOID NEEDLESTICKS.
- DO NOT REPLACE ORIGINAL NEEDLE COVER AFTER USE.
- USE ONCE AND DISCARD IMMEDIATELY IN ACCORDANCE WITH LOCAL SAFETY STANDARDS.

CAUTION

- If needle is bent or damaged, no attempt should be made to straighten needle or use the product.
- Do not attempt to deactivate the safety device by forcing the needle out of the safety sheath.
- For single use only. Do not reuse. Do not resterilize. Do not reprocess.

PRECAUTIONS

- Keep hands behind needle at all times during use and disposal.
- Observe Universal Precautions on ALL patients.
- Do not use if the unit package or product has been damaged or contaminated.
- Do not store at extreme temperature and humidity. Avoid direct sunlight.

RX ONLY. The advertisement is directed to physicians only, and not to consumers. Refer to product labels and packaging insert for complete warnings, precautions, potential complications, and instructions for use. Products may not have regulatory approval in all countries. Please contact your local sales representative if you have questions about the availability of products in your area.