



ATLANTIC
MEDICAL
SOLUTIONS

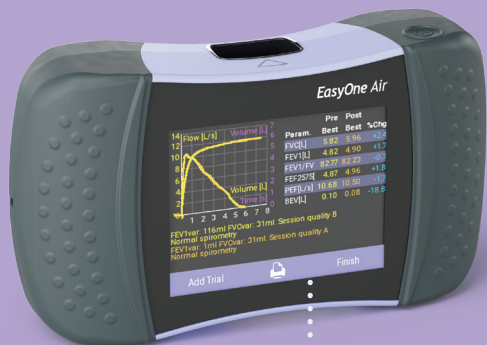


EasyOne Air

Portable and PC spirometer

EasyOne Air is a flexible, accurate and proven spirometry solution. Easily connect to the PC with Bluetooth for real-time patient incentives, data exchange and EMR connectivity.

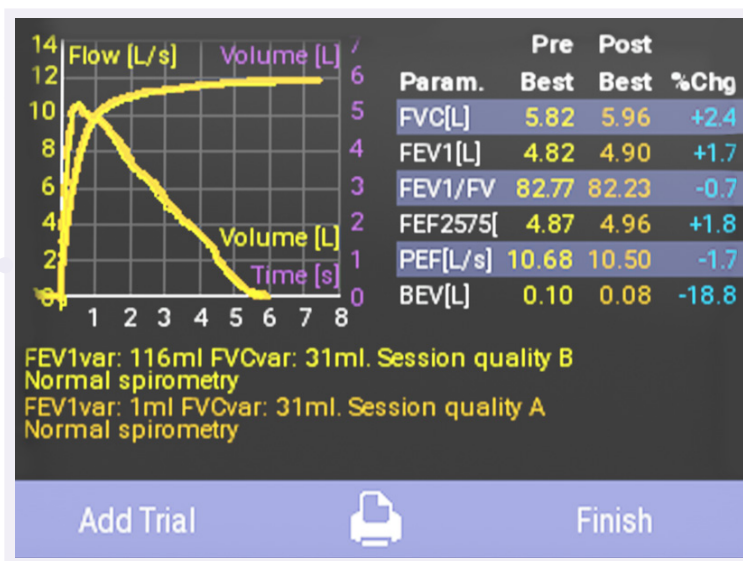
nddmed.com



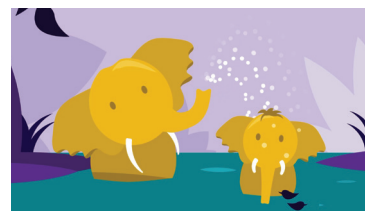
Simple. Certain. Proven.

Features

- Large color screen
- Easy navigation
- Calibration-free technology
- Rechargeable battery: >100 tests one cycle
- Bluetooth connectivity
- Flexible use
- Portable or PC mode
- Real-time animated incentives
- Real-time data transfer
- Proven EMR integration with top EMR/EHR systems



Incentive screens



nnd
TrueFlow
makes the difference

nnd's unique ultrasonic flow measurement is highly accurate in all flow ranges, independent of gas composition, pressure, temperature and humidity. **nnd TrueFlow** is a hygienic and resistance-free solution that does not require calibration during its lifetime.

EasyOne Connect

EasyOne Connect software offers one database and one platform for all EasyOne point-of-care-solutions. Data management has never been easier.



SCAN ME

Specifications

Test types: FVC, FVL, SVC, MVV and Pre/Post testing

Languages: English, Danish, Dutch, French, German, Italian, Polish, Portuguese, Russian, Spanish, Swedish

EMR connectivity: EasyOne Connect

Dimensions: 3.4" x 6.1" x 1.4", 13 oz
87 mm X 155 mm x 36 mm, 0.356 kg

Standards: ATS/ERS 2019 and 2005, NIOSH, OSHA, SSA Disability

Part numbers

2500-2A: EasyOne Air spirometry system (US and Canada)

2500-2INT: EasyOne Air spirometry system (International)

5050-50: EasyOne FlowTube box of 50

5050-200: EasyOne FlowTube box of 200

nnd Medical Technologies • 300 Brickstone Square, Suite 604 Andover, MA, 01810 USA • Phone: +1-978-470-0923
nnd Medizintechnik AG • Technoparkstrasse 1, CH-8005 Zurich, Switzerland • Phone: +41 44 512 65 00



AtlanticMedicalSolutions.com
704-561-0004

nndmed.com